

【Enamel Painting】



This is a fine glass powder that you can apply by brush. When mixing it with our water-based medium, you can paint with it like oil paint. By adding water to the mix, you can achieve a watercolor-like effect. It is easy to paint fine lines and the colors (except for red) are intermixable.

No.	Color	10g	100g	300g	500g	1kg
H-Gr	Green	¥ 1, 000.	¥ 8, 000.	¥ 21, 000.	¥ 30, 000.	¥ 50, 000.
H-Bu	Blue	¥ 1, 000.	¥ 8, 000.	¥ 21, 000.	¥ 30, 000.	¥ 50, 000.
H-Y	Yellow	¥ 1, 000.	¥ 8, 000.	¥ 21, 000.	¥ 30, 000.	¥ 50, 000.
H-R	Red	¥ 1, 100.	¥ 8, 800.	¥ 23, 100.	¥ 33, 000.	¥ 55, 000.
H-W	White	¥ 1, 100.	¥ 8, 800.	¥ 23, 100.	¥ 33, 000.	¥ 55, 000.
H-B	Black	¥ 1, 100.	¥ 8, 800.	¥ 23, 100.	¥ 33, 000.	¥ 55, 000.
HMG	Metallic Gold	¥ 1, 300.	¥ 10, 400.	¥ 27, 300.	¥ 39, 000.	¥ 65, 000.
HMS	Metallic Silver	¥ 1, 600.	¥ 12, 800.	¥ 33, 600.	¥ 48, 000.	¥ 80, 000.
HMB	Metallic Blue	¥ 1, 300.	¥ 10, 400.	¥ 27, 300.	¥ 39, 000.	¥ 65, 000.
HMP	Metallic Pink	¥ 1, 300.	¥ 10, 400.	¥ 27, 300.	¥ 39, 000.	¥ 65, 000.

※By using pastel paper, you can simulate watercolor painting.

Description	Size	1 sheet	5 sheets	10 sheets	30 sheets
Pastel Paper	215 × 285mm (8. 4 × 11in)	¥ 650.	¥ 2, 925.	¥ 5, 200.	¥ 13, 650.



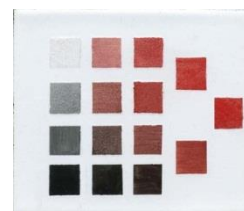
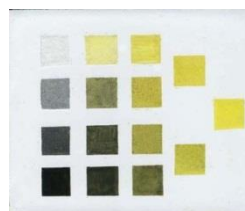
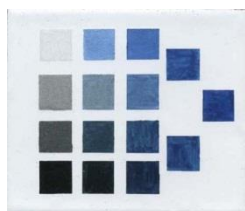
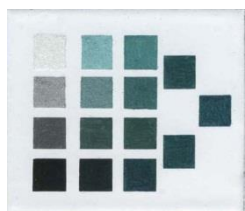
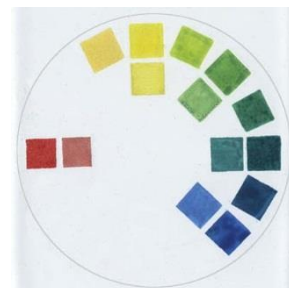
★This paint powder is an original blend created by HIROSAWA ENAMEL INSTITUTE

★Mix the powder and our water-based medium with a pallet knife and paint it onto a base.

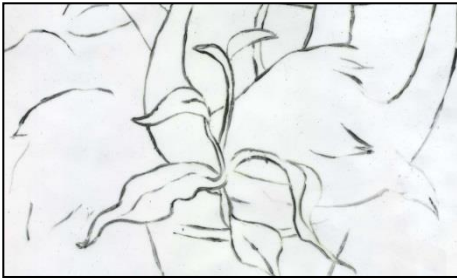
After the paint has dried, fire it at 750 to 800°C.

★All the colors except for red are intermixable. The red powder creates lead sulfide when mixed with other colors so it may darken undesirably.

★Black and white mix well with all of the colors.

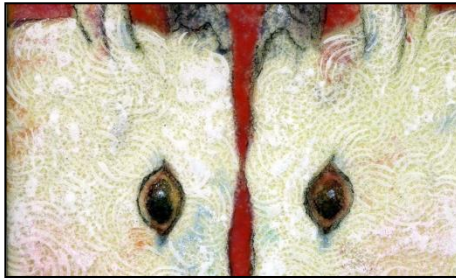


【Enamel Painting】



Transferring Images onto a Base

Translate an image using carbon paper and paint over the lines. Fire at 750°C. Take care not to heat the piece too often or for too long, or the lines may become blurry.



Finishing Lines

This paint allows you to draw fine lines, for example clear outlines and hair details.



Decorate your Cloisonné

After finishing your cloisonné, you could add some patterns. (By mixing metallic colors with white they will become more opaque and easier to see on a dark background.)



Like Oil Paint

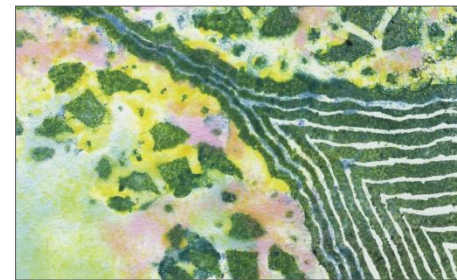
All colors are intermixable except for red, which can still be mixed with black and white.

Mixing will allow you to paint with subtle tones and a wide range of colors to choose from. (Tip: Be careful not to layer the paint too thickly)



Like Watercolor

By using our pastel paper, you achieve a watercolor-like effect. Soak the pastel paper in water, remove the backing sheet, then set the paper on the white base. After letting it dry, prepare it with medium and plenty of water.



Scratch

This powder is finely ground. After painting it on a white base, allow the piece to dry. Once dry, you can achieve fine lines by scratching the surface with a toothpick or a similar pointed tool.

– Watercolor Technique –



Use a pastel paper for the base, then put some water or water-thinned paint on it. Before it dries, apply more paint with a brush. The colors will bleed similarly to watercolor paints.



Thin the paint with water, drop some of it onto your base, then try blowing it with a straw. You can make interesting patterns like tree branches or fireworks.

This paint can be used in a variety of ways and give you wide range of expression.



(Example)
After firing some flux, draw around the patterns with metallic gold, blue, and pink.